

This software updates or alters the functions and features noted below. The instructions and information that follow are meant as a supplement to the original instruction manual that accompanied the T18SZ/T16SZ/FX-36 transmitter. Please refer to the original instruction manual where applicable, but replace the steps indicated below with these instructions. Please check to ensure that the update has been installed.

- 1) Select the System Menu.
- 2) Touch the [Information] button.
- 3) Confirm that the information in the display indicates the version numbers as noted above.

1. Change of the trainer connector power supply specification

The update enables the trainer connector to supply power to external equipment connected to the trainer connector, when turning on the power by pressing the power switch in the trainer student mode.

! Futaba is not responsible for damage sustained by combination with parts other than Futaba Genuine equipment.

! When connecting Futaba transmitters to the trainer code, do not operate the power switch on the student side transmitter and operate the power switch on the teacher side transmitter as before. The student side transmitter turns power automatically in conjunction with the teacher side.

2. Telemetry sensor made by O.S.ENGINES MFG.

It corresponds to O.S. EM-100 flight controller(under development). For details, please refer to the instruction manual of EM-100.

*The EM-100 is not handled at Futaba.

3. Fixed defect

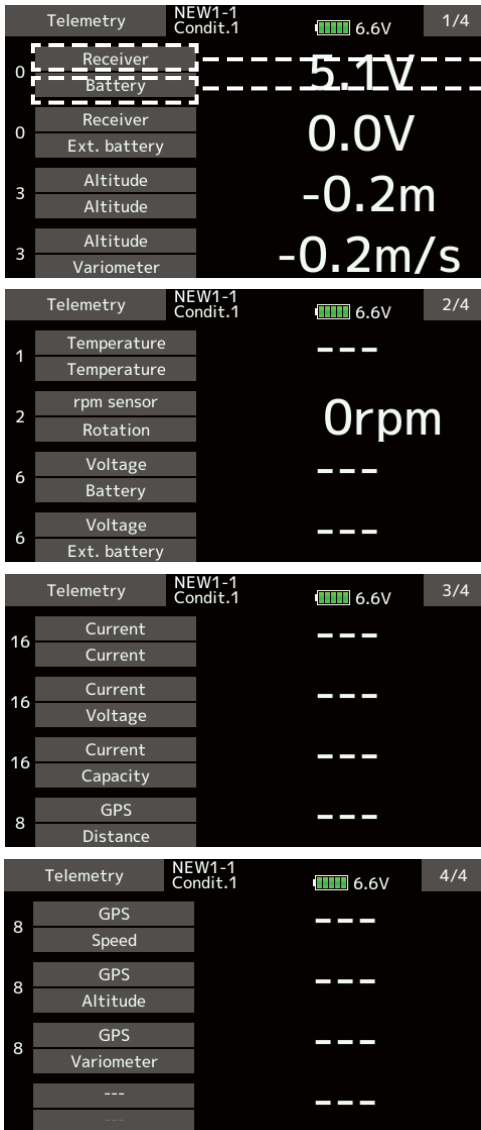
- ◆ The count value of the integration timer has been corrected.
- ◆ Fixed the behavior of Ailevator.
- ◆ Fixed a problem that seldom the power switch does not work.

This software updates or alters the functions and features noted below. The instructions and information that follow are meant as a supplement to the original instruction manual that accompanied the T16SZ transmitter. Please refer to the original instruction manual where applicable, but replace the steps indicated below with these instructions. Please check to ensure that the update has been installed.

- 1) Select the System Menu.
- 2) Touch the [Information] button.
- 3) Confirm that the information in the display indicates the version numbers as noted above.

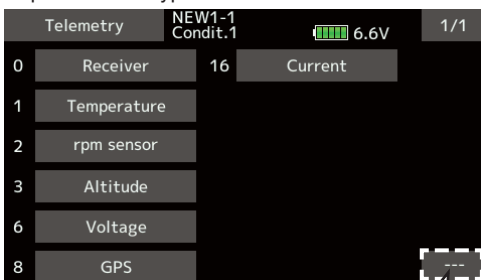
1. Telemetry display (The extension of the number of telemetry data which is shown)

The number of telemetry data which is displayed to Telemetry display screen is extended. It is 16 items (4 pages) maximum.



Sensor type selection screen

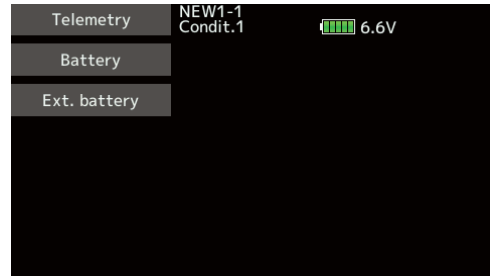
You can choose which type of sensor to displays. Tap the sensor type.



If you do not want to display telemetry data on the telemetry monitor screen, select "----".

Sensor selection screen

For some sensor types, you can choose the display item. Tap to select.



2. Timer Alarm

Added a setting to keep the alarm after the alarm set time.

Constant: The alarm does not stop
One time: Stop the alarm at once



3. Model select

Model data of FX-32 can be used.

4. Data Converter

FX-30 and T12FG have been added to the data converter compatible models.

The transmitter name is displayed on icon.



5. Butterfly Elevator setting (Glider)

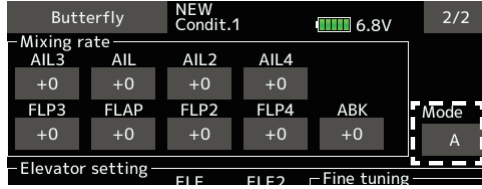
Added fine tuning function to butterfly elevator setting.



*When Flying wing type, it was made not to display Elevator setting.

6. Butterfly mixing mode (Glider)

The operation of Butterfly mixing was changed.



Mode A, mode B selection added.

• Mode A

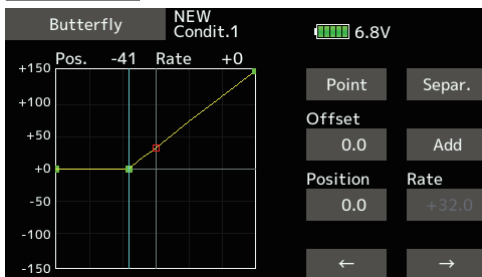
(Normal)

- The butterfly operation direction is reversed at the neutral position (50%) of the throttle stick.

At offset 20



At offset 70



The direction of butterfly motion is reversed.

• Mode B

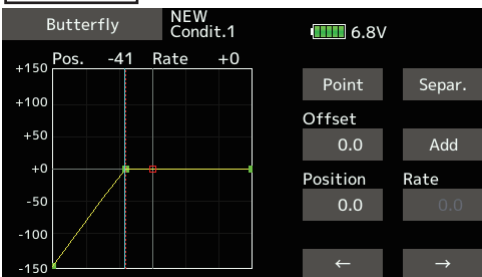
(Throttle stick full stroke MODE)

- It does not reverse at the neutral position, so you can set the butterfly operation start point with the full stroke of the throttle stick.

At offset 20



At offset 70



The direction of butterfly motion is not reversed.

7. Butterfly Differential rate (Glider)

The operation of Butterfly Differential rate was changed.

- ◆ When Butterfly Differential rate is "+", Up rate is decrease and DOWN rate is increase.
- ◆ When Butterfly Differential rate is "-", the calculation method of UP/DOWN and a direction become reverse.

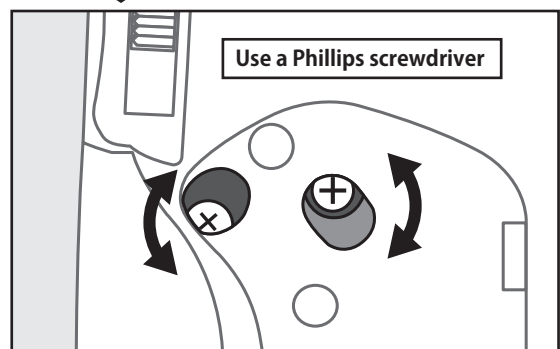
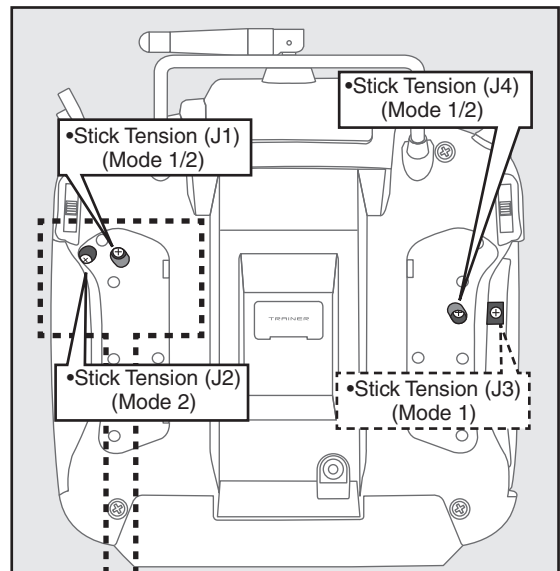
8. Error correction for Failsafe screen

A fault that a fail-safe position indicator is not shown on the Failsafe screen in FASST-7ch mode has been fixed.

9. Manual change page 30

This supplement contains information for correcting manual errors. Refer to the following corrected items.

Remove the transmitter's rear rubber grips.
(When using Mode 1, you will need to remove the side cover.)



FUTABA CORPORATION

Makuhari Techno-Garden Bldg. B-6F, 1-3 Nakase, Mihama-ku, Chiba, 261-8555, Japan
Phone: +81-43-296-8259, Facsimile: +81-43-296-8253

©FUTABA CORPORATION 2017, 10 (1)